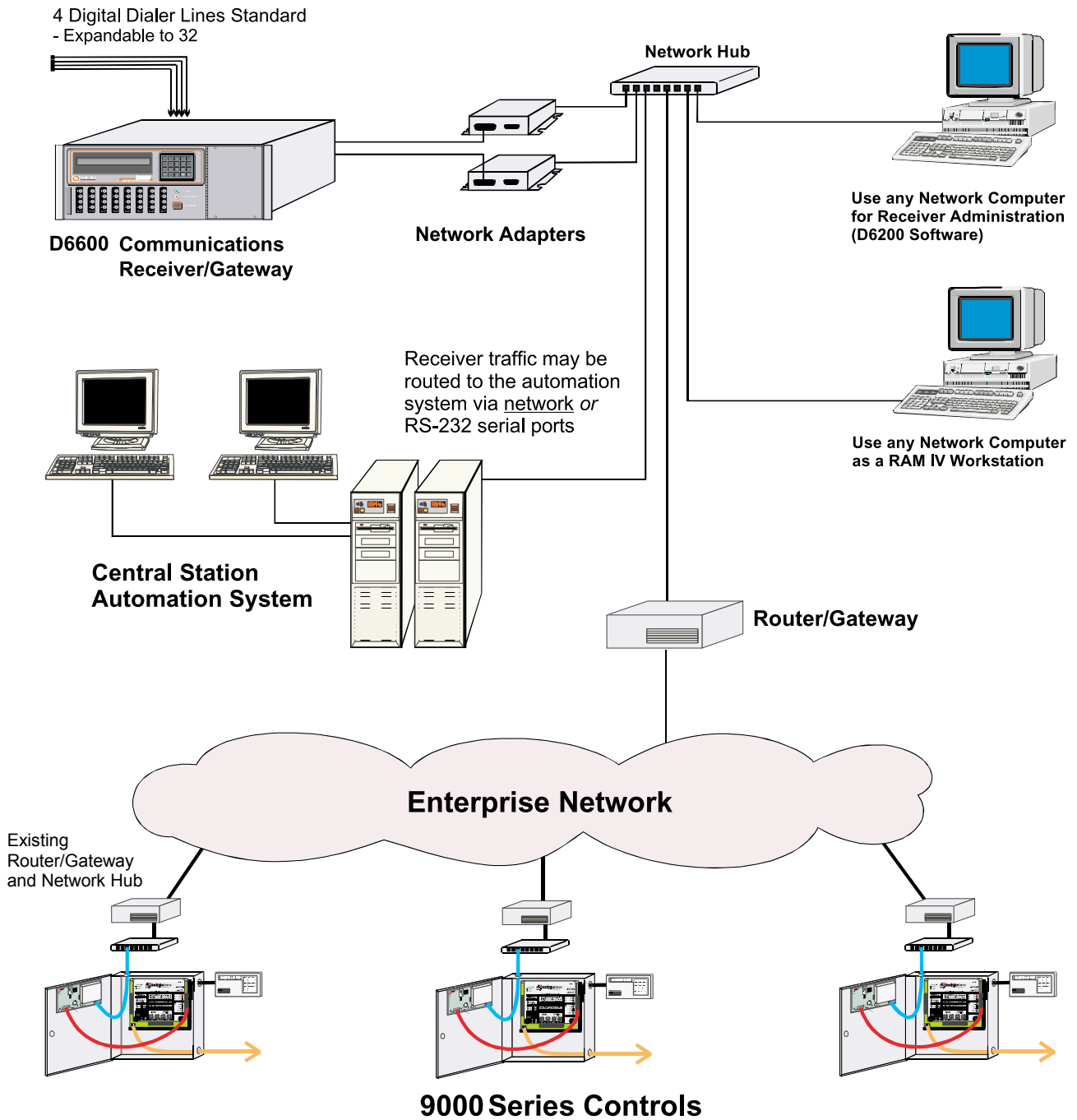


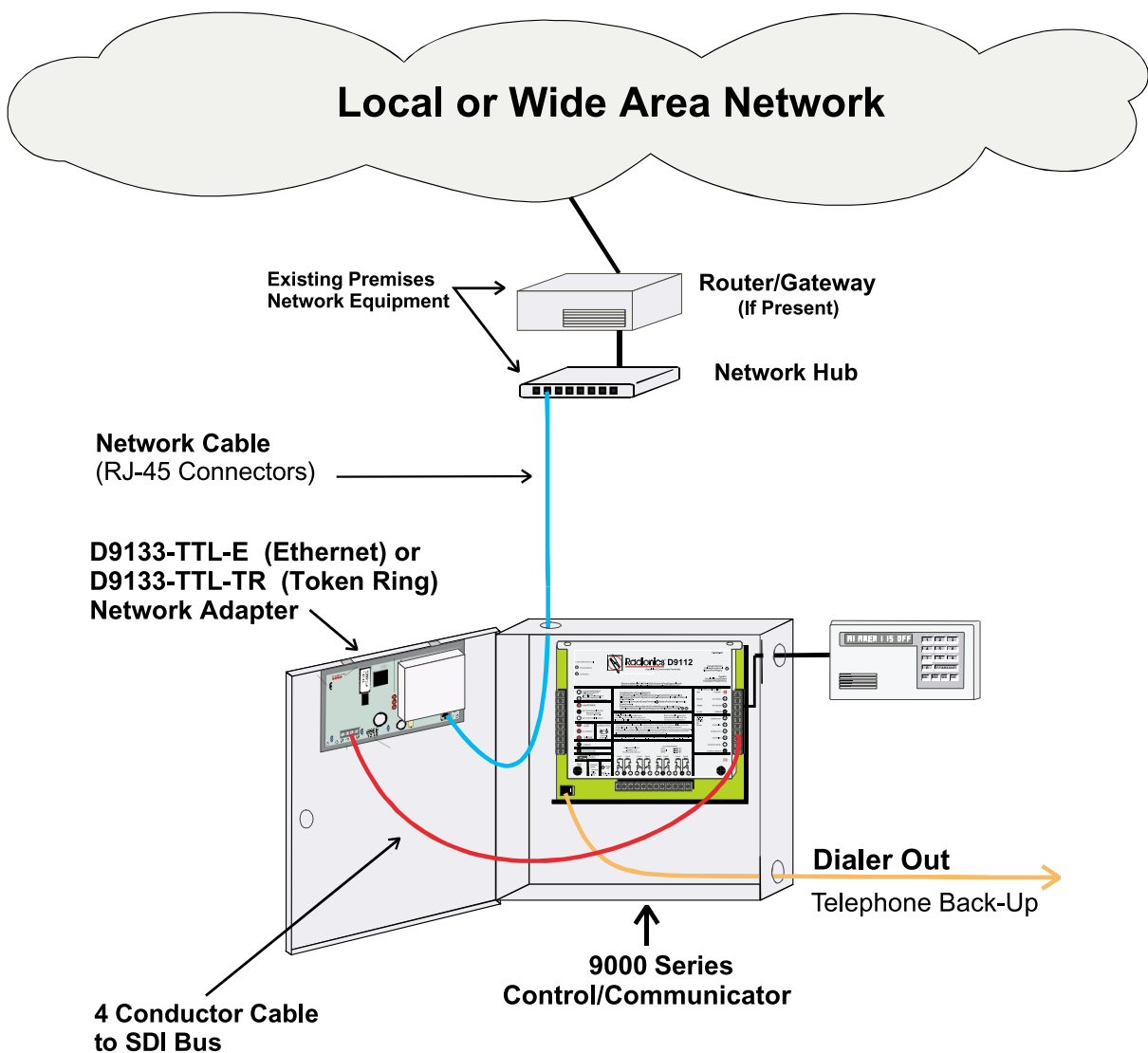
End User Enterprise Wide Network Application



Network Application

Features

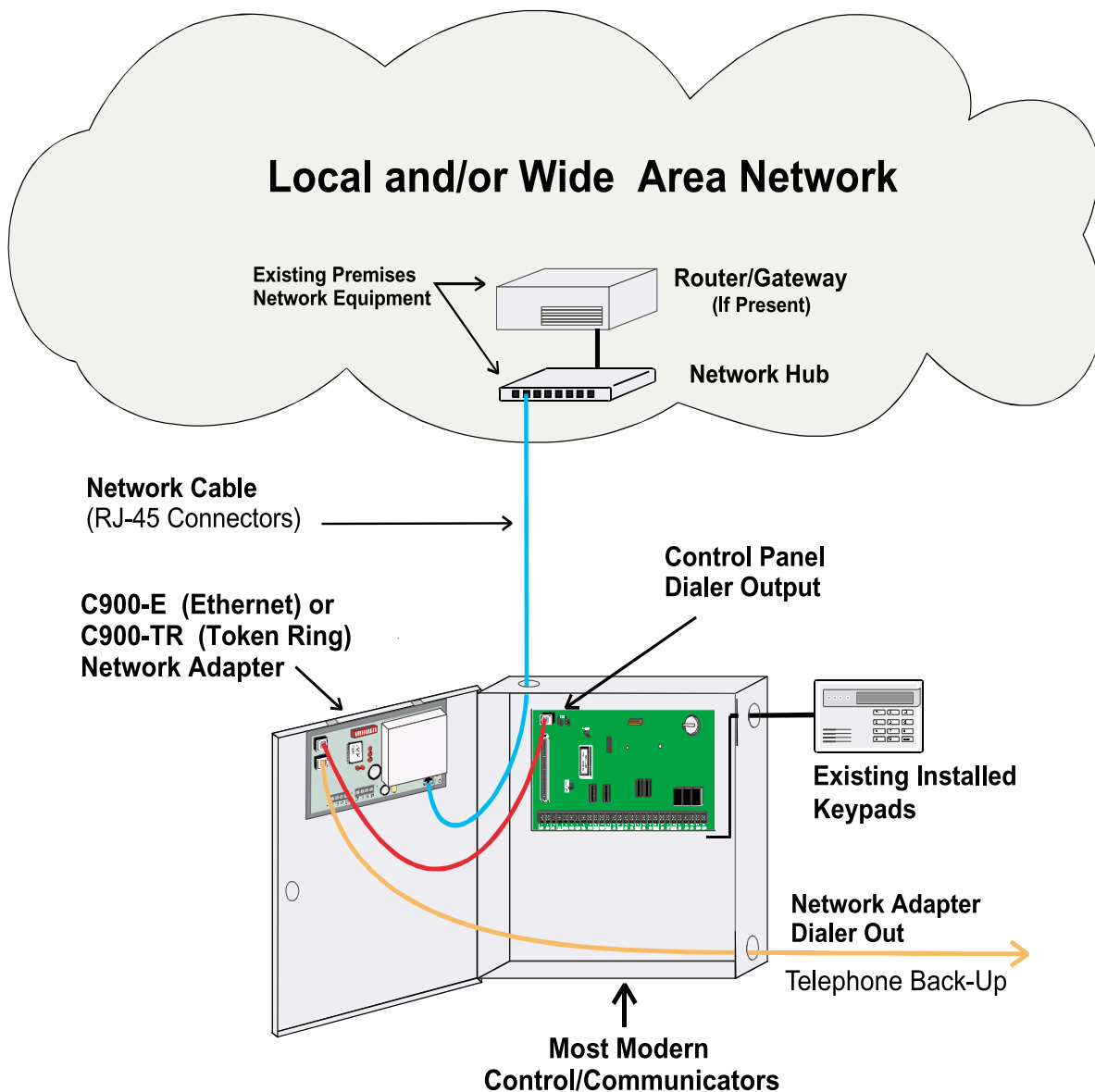
- High security/supervision via network at no incremental cost — check-in intervals from 30 seconds to 18 hours
- Near instantaneous alarm reporting
- Message routing to any combination of four (4) IP addresses or telephone numbers
- Access control and open/close messages via network at no incremental cost
- Fast Remote Account Manager (RAM IV) control, diagnostics and programming via Network



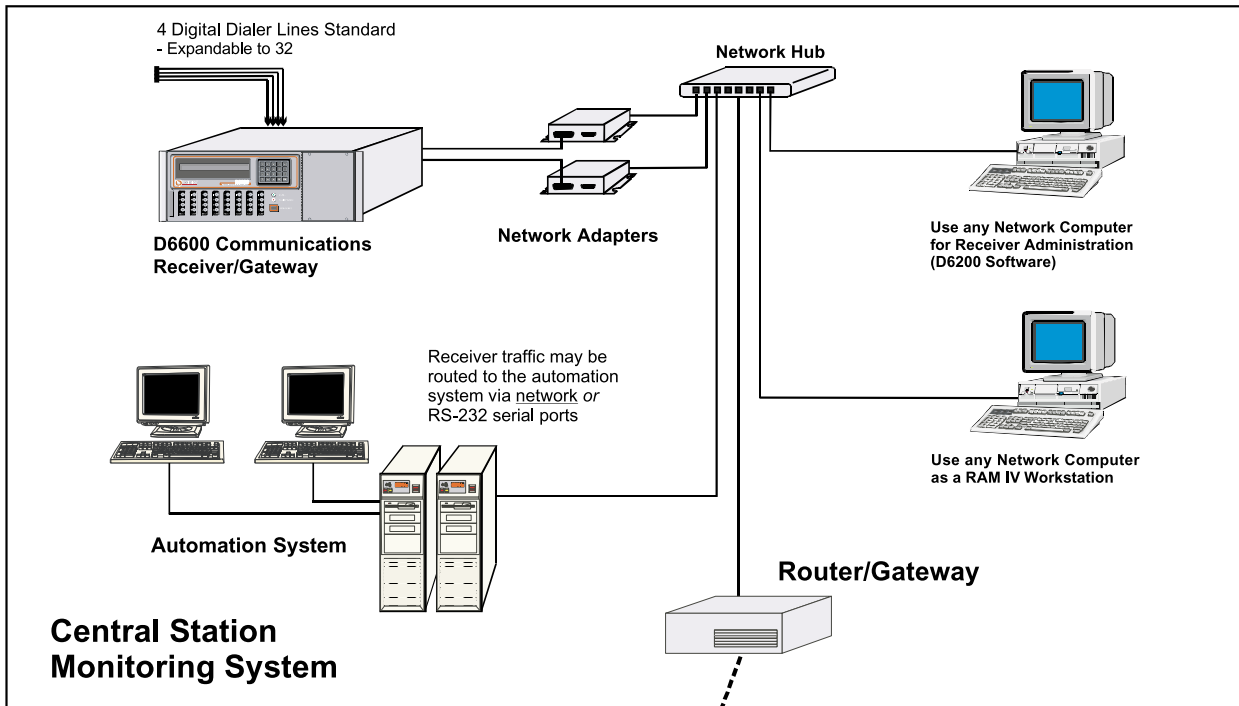
Network Application

Features

- High security/supervision via network at no incremental cost — check-in intervals of 30 seconds or 240 seconds
- Works with most modern control/communicators
- Alarm and Supervisory signals communicated via network at no incremental cost
- Network adapter switches panel dialer to telephone line in the event of network communication failure
- Adapters available for Ethernet and Token-Ring Networks



Central Station Network Application



Leased Line, Channel, or VPN Connection
Between Customer Network and Central
Station - IP Addresses Assigned by Customer
Network Administrator - Communication
Restricted to Population of Alarm Devices

